



# Spiritual Leadership of Our Time

*Free source internet*

# **We need a new type of leadership**

“We cannot depend on governments  
to heal our wounds,  
we have to help each other”.

Hene, Maori Elder

A great vision and massive awareness  
is breaking through in people



*Source free internet*

- The old forms, structures and institutions can no longer serve our collective needs.
- Great fear, loss of identity, lack of energy, loss of cohesion in groups, old conflicts flaring up.
- Growing aggression, soul loss.



*Source free internet*

We are more than  
social agents to  
improve the  
existing situation;

we are called to  
something more.

We have a sense of  
the future  
motivating us to  
look beyond the  
current limits of  
humanity

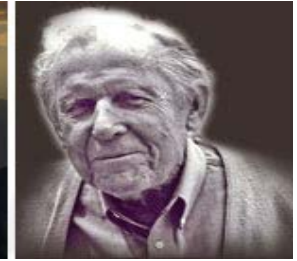
Jonas Salk

**Only the person connected to the life of the whole planet  
can make the right decisions for life**

- We need the guidance of the prophet, the priest, the saint, the yogi, the Buddhist monk, the Chinese sage, the Greek philosopher and the modern scientist.
- Yet they might be considered limited as guides in the human presence in its rapport to the natural systems of the planet.

Th. Berry

- Few of the traditional guides seem able to accept this understanding as a revelatory experience and draw wisdom and insight from there.
- This can only be done by an ecologically sensitive person.
- We need an ecological spirituality with an integral ecologist as spiritual guide.



The integral ecologist is the spokesperson for the planet  
and will speak and act from the numinous aspects and  
wisdom of a universe  
emergent from the beginning.

(s)He can deepen the awareness of the processes related to  
an emergent ecological worldview in the individual person  
and in group, organizations, a culture.

Thomas Berry



We need to go to  
the Earth, as the  
source whence  
we came  
and ask for its  
guidance.



# **We are confused about our role in the Universe.**

- We need guides and soul friends that can support, name and gently direct these processes in individual persons and in groups and organizations.
- We need a specific type of leader in these times of evolutionary changes.
- We need evolutionary leadership.

Leadership is the ability to create in subtle ways the conditions for miracles to happen, because we attune to the evolutionary flow.

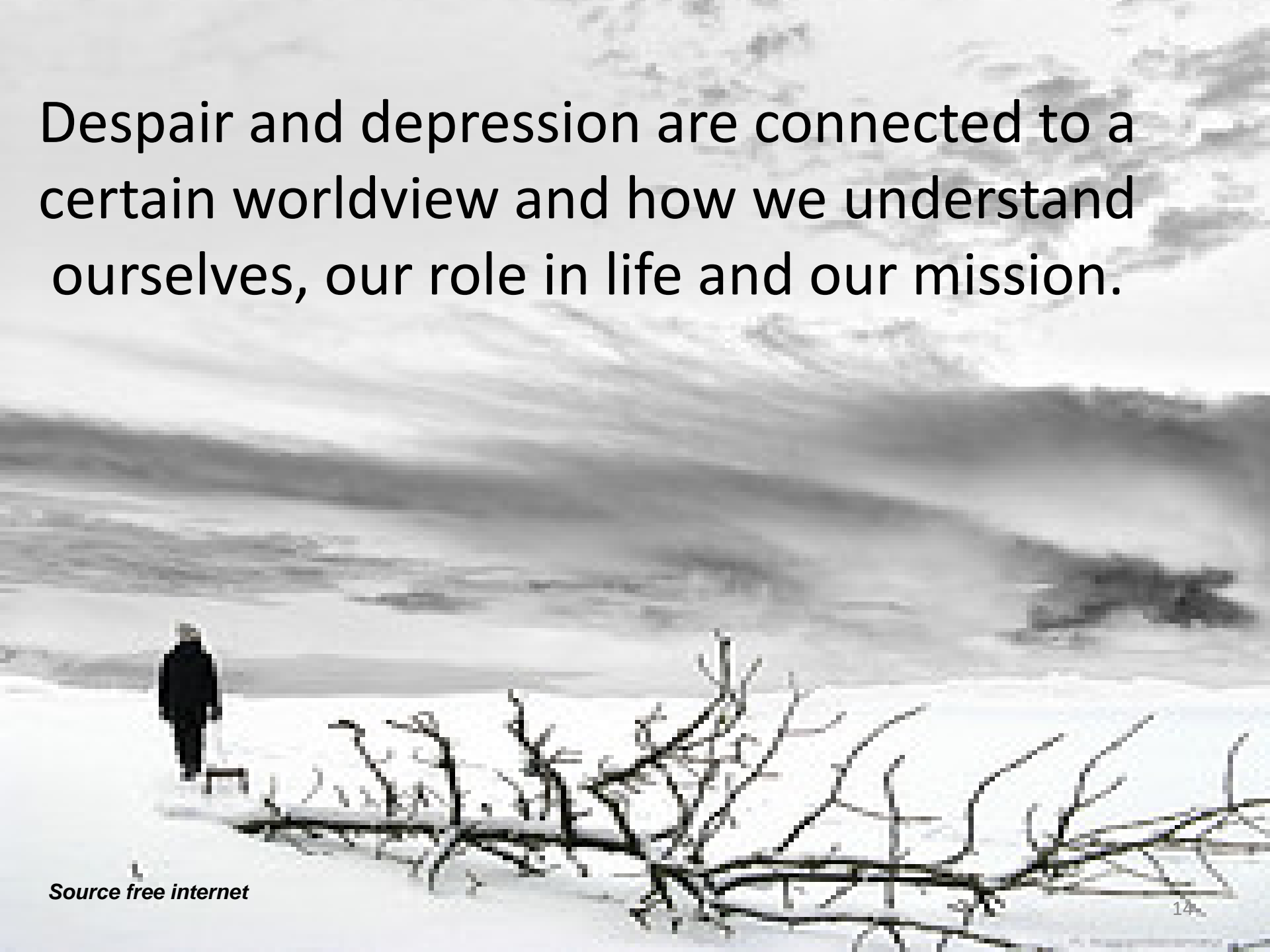


The very  
core of  
leadership  
is service.

Service to  
the future  
of Earth  
and  
humanity.

- Leadership is constantly focussed on and concerned with creating a space.
- To deepen insight in the present realities of the world.
- Can we perceive reality or do we react?
- Problems or possibilities?
- Limitations of unlimited potential?

Despair and depression are connected to a certain worldview and how we understand ourselves, our role in life and our mission.



“ For the first time in history survival of the human race is depending on the change of the human heart .  
What we need is service and courage”.

E. Fromm

**The new leadership is  
grounded in the New  
Cosmology**





- The leader is the one who sees the most, has a great vision and looks far.
- This leader is in touch with the process of transformation happening to Earth and humanity and all of life.
- The new leader is like the elder of a tribe and dares to take his role.
- It is about wisdom, inner knowing, support and vision.



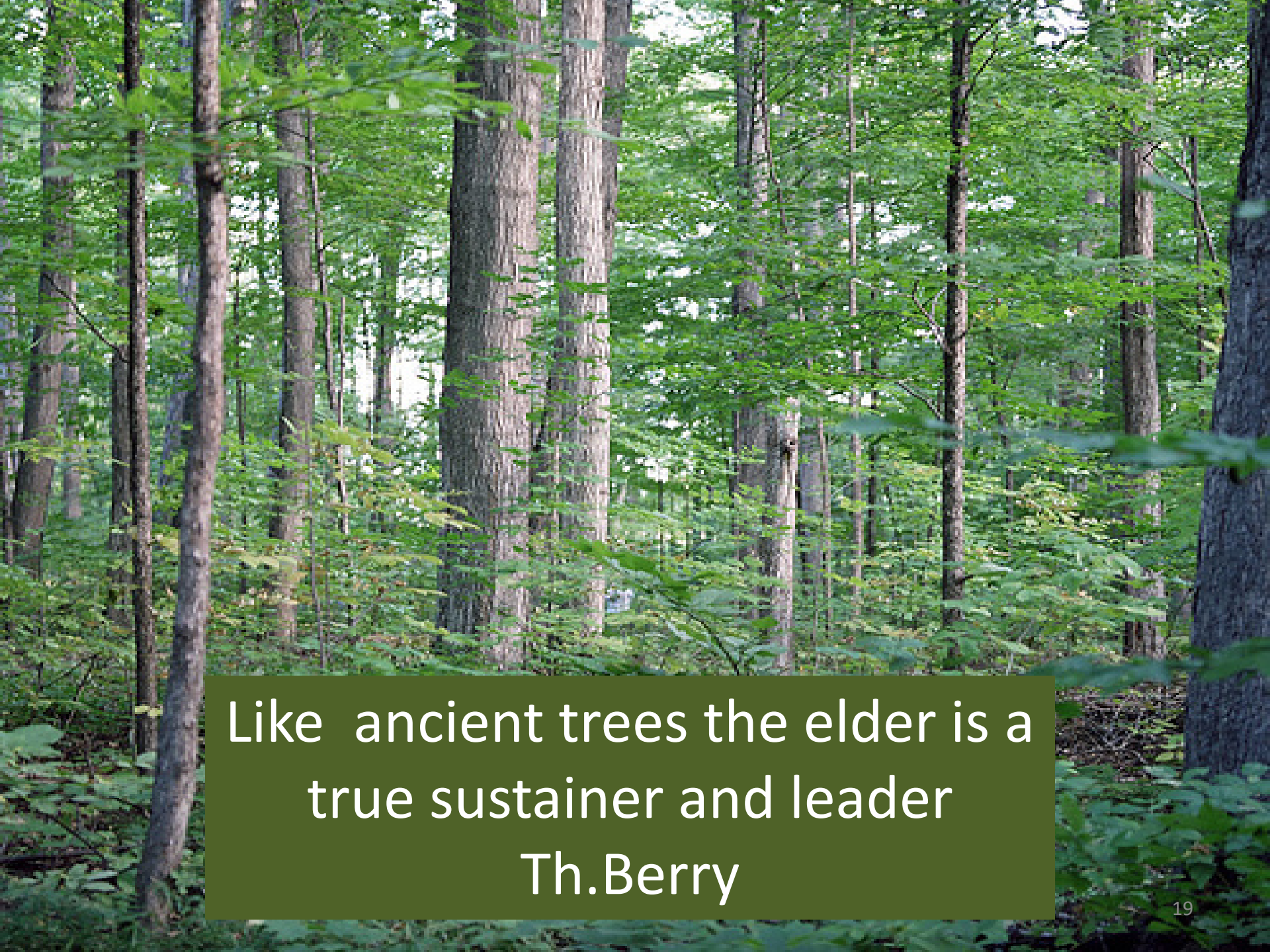
Source free internet

“Elderhood occurs when you move from the depths of your own soul to the depths of the community soul, to the integrity and well - being of the world. “


It is moving into crowning, becoming the crone, the sage, the wise person.

It brings with it the loss of familiar and comfortable ways of being and the enjoyment and fulfilling of it. We have to let go of our ego-achievements.

J.Macy

A photograph of a dense forest. The scene is filled with numerous tall, slender trees, likely deciduous, with light-colored bark. The canopy is thick with vibrant green leaves, creating a lush and verdant environment. The lighting suggests a bright day, with sunlight filtering through the foliage. In the foreground, there are more green leaves and branches, some slightly out of focus, adding depth to the image.

Like ancient trees the elder is a  
true sustainer and leader  
Th.Berry

A close-up photograph of two hands, one from the left and one from the right, holding a bright, glowing sphere of light. The hands are positioned as if they are gently cradling or releasing the sphere. The background is dark, and the light from the sphere creates a strong lens flare effect, radiating outwards. The hands appear to be of different skin tones, with the left hand being lighter and the right hand being darker. The overall mood is spiritual and ethereal.

**Receiving  
guidance  
from the  
Spiritual World**



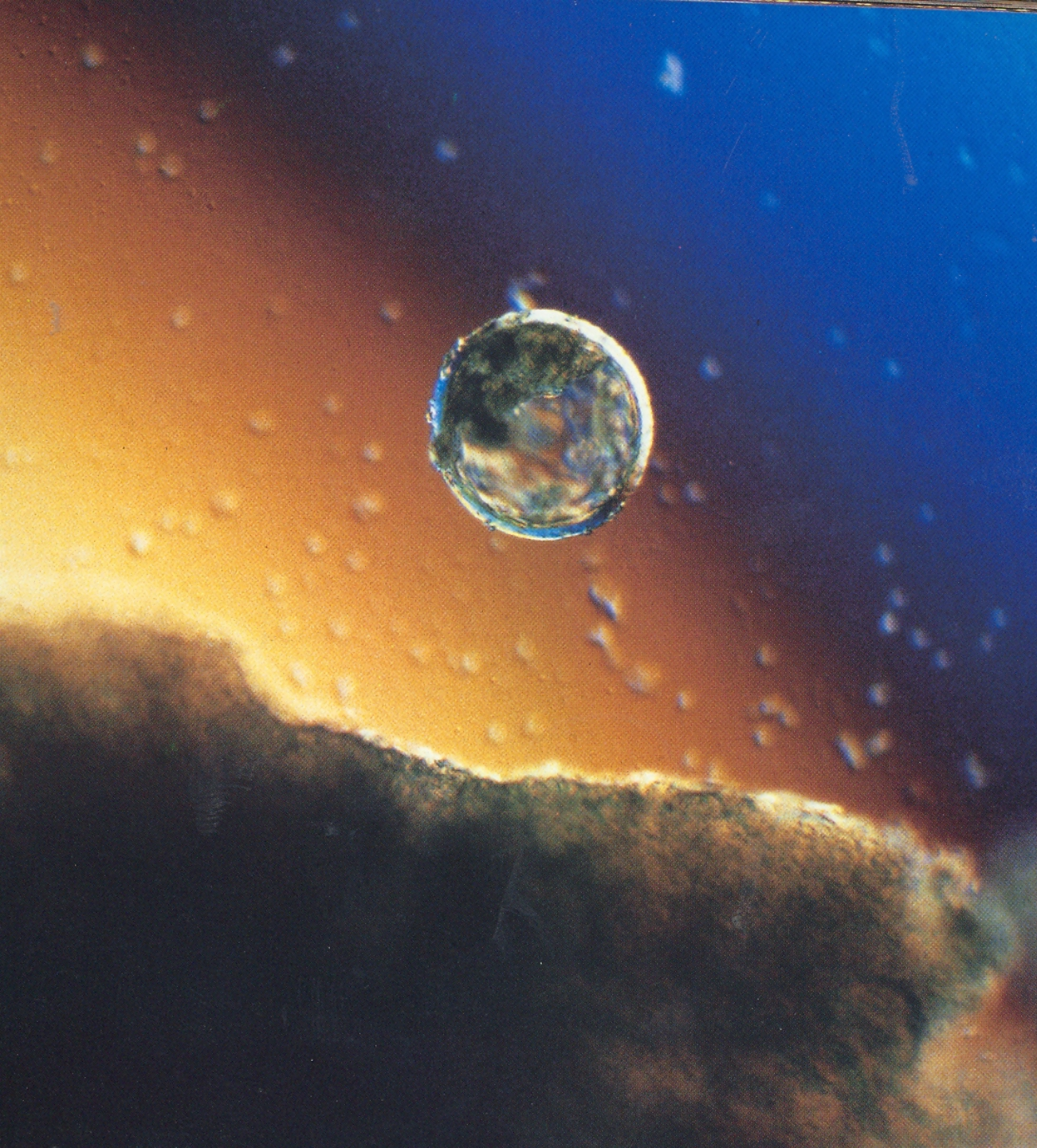
- New leaders can move in many worlds at once: from the situation in our affluent countries to the poverty and bare subsistence level of other places in the world.
- Ecological leadership has a special sensitivity for adaptation to the present situations; only who can adapt will be able to survive.
- It is a very basic ecological law.

# Feminine views and values

- Connecting, attuning, empathy, deep listening, trust, intuitions, Inner guidance, belief in creative power, vision, words that inspire.
- Listening to our soul and the soul of the Earth

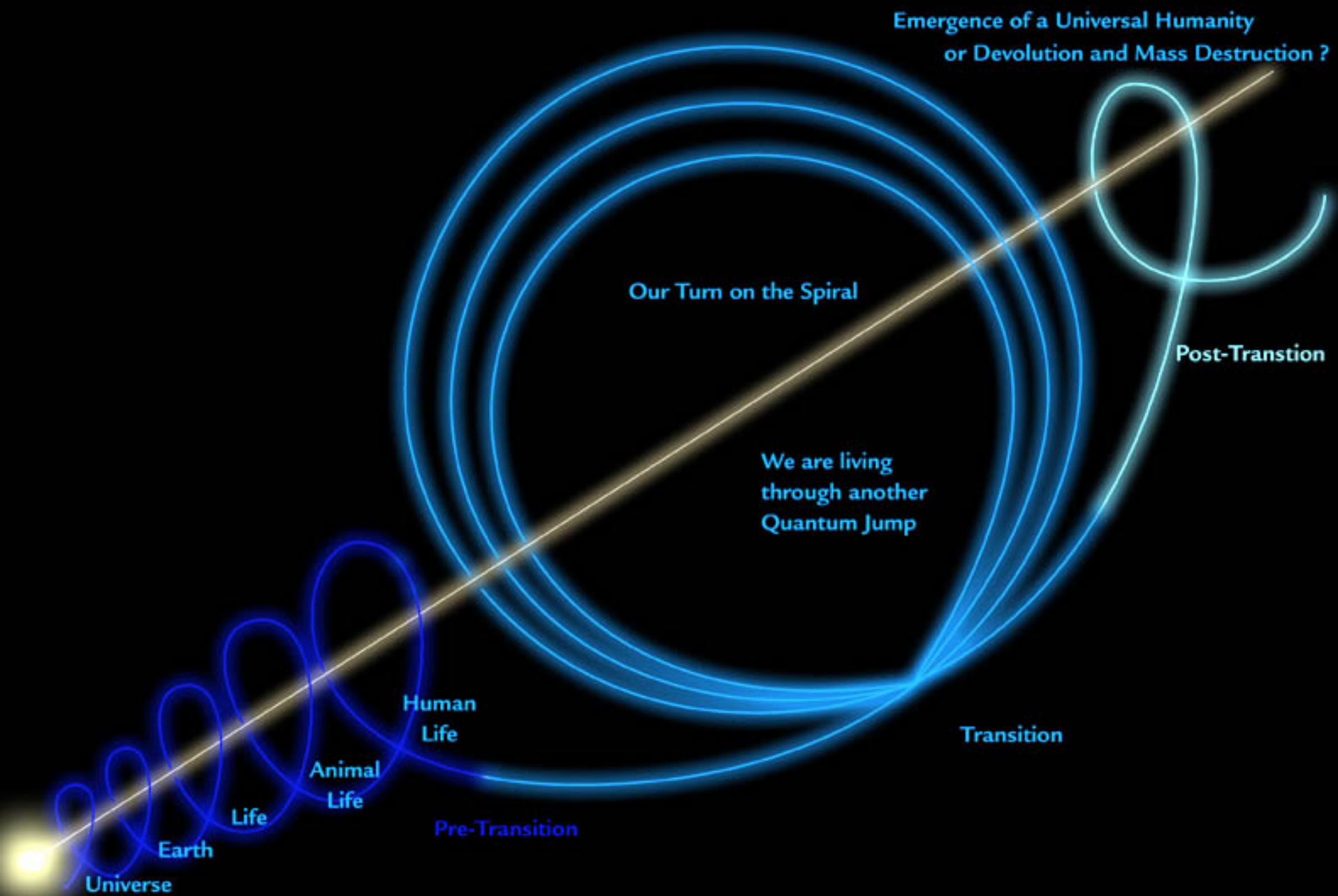
# Who guides the leader?

- From the beginning there has been an inner direction in the whole process of evolution.
- Every atom, every cell, every organism, every creature, every human being has known from their own core how to move and how to be.
- Inner guidance and inner direction is innate in the Cosmic process, the Creation process.



Who has  
shown  
the  
sperm  
the way  
to the  
egg cell?





Barbara Marx Hubbard Conscious Evolution



If there is direction in the cosmos,  
then we humans are not lost.  
We are guided from the heart of the Universe.



All is  
medicine

- Medicine is where we are we can tune in to and connect with the cosmic wisdom and guidance.
- We can walk, sit, work in connectedness with and be guided by this wisdom and knowing.
- Then we are guided by the same powers that guided the Evolution and the life processes. We are grounded, earthed!
- Medicine is all that connects you with the creative power of the Beginning. Inner light, direction, wisdom.

It can be the direction of the wind, an animal that crosses our path, a plant that reveals her healing potency.

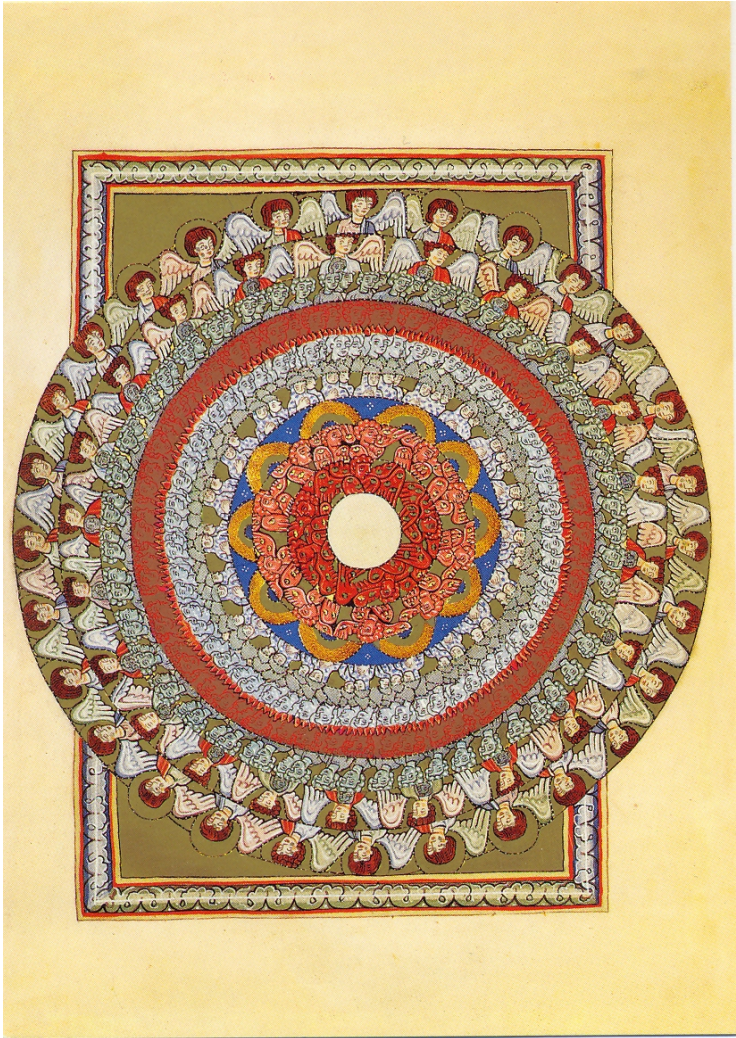
It has been sought in the constellation of the planets and the stars and the forms of clouds.

The Ancients knew where to go for guidance.



Our guides  
work for  
us.  
People of  
all times  
have  
known  
that there  
are  
helpers.





Hildegard of Bingen wrote about the God - given task of angels.

In the Christian tradition we have known guardian angels all along: guiding us and protecting us on our ways.

- Synchronicity: is the of experience two or more events that are apparently causally unrelated now occurring together in a meaningful manner. To count as synchronicity, the events should be unlikely to occur together by chance.
- As we grow in our experience of the ultimate connectedness of all things, we grow in openness and receptivity to all that happens.
- Synchronical events are more likely to happen when we are attuned to the cosmic wisdom and processes.





The Cosmos  
is no accident



The body heals cell by cell

Humanity heals, person by person





How beautiful is the Kingdom of God in each of us



**Every time we surrender to an impulse of  
true love, something in the very fabric of  
the Earth's atmosphere shifts  
F. Coppieters**

*Free picture internet*



**Each of us carries unique gifts  
to bring about the great transition of our time**

# Inspirations

To be able to make this PowerPoint

I acknowledge Barbara Marx Hubbard and her life-time work of Conscious Evolution.

See [www.evolve.org](http://www.evolve.org)

Elly Verrijt

2011-2021